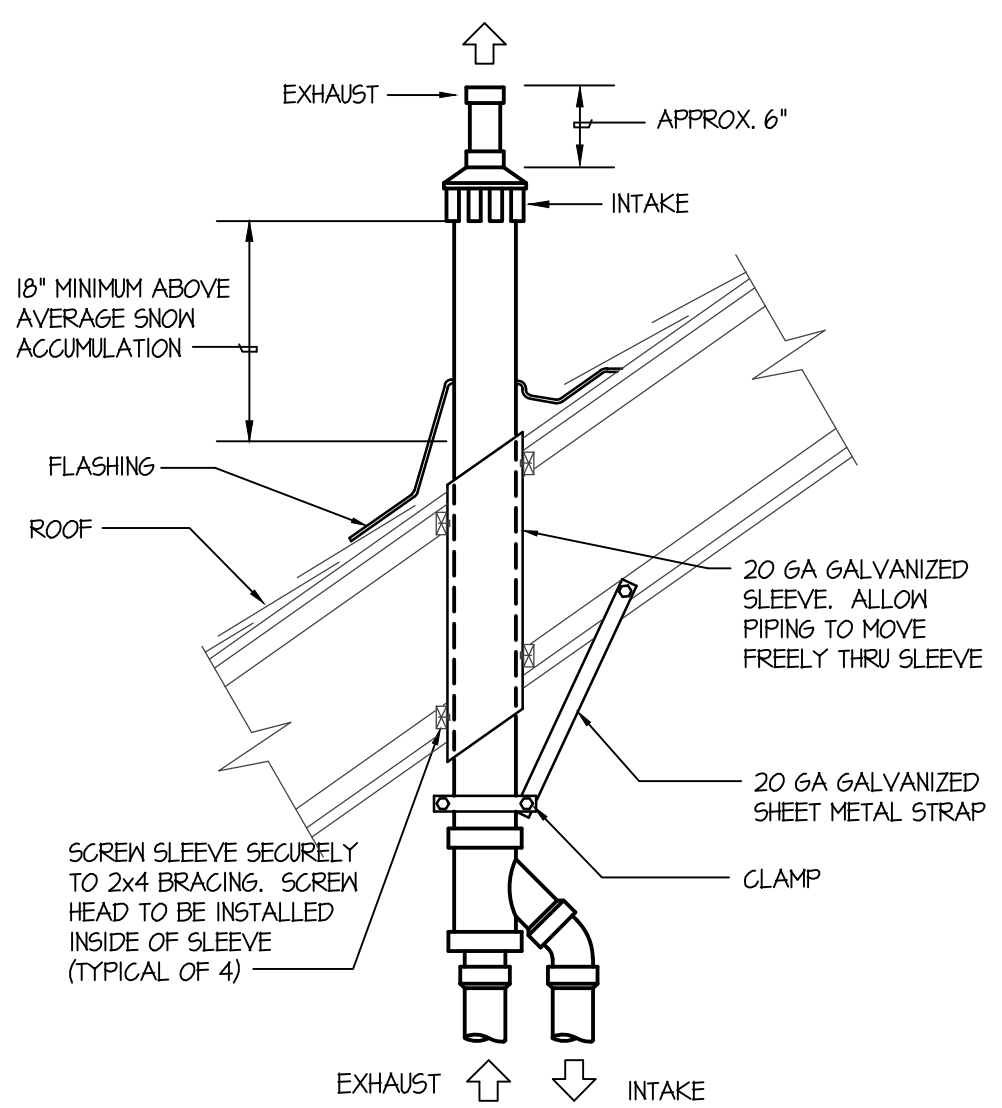
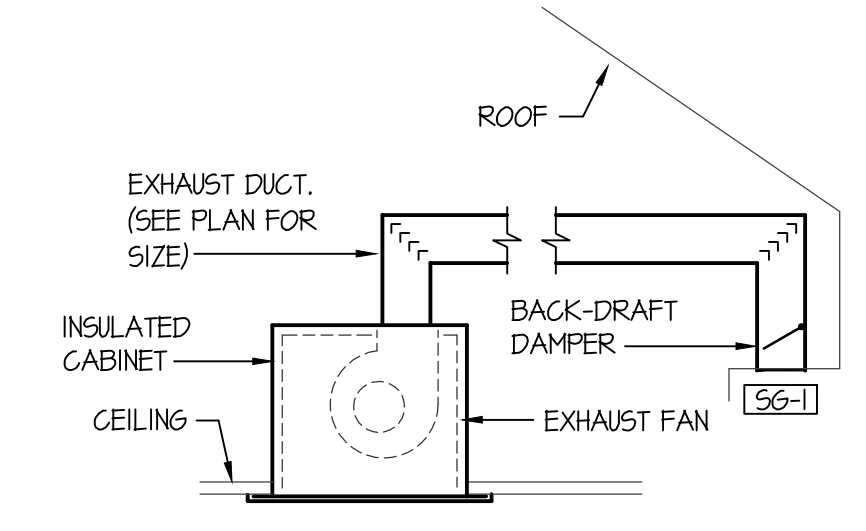


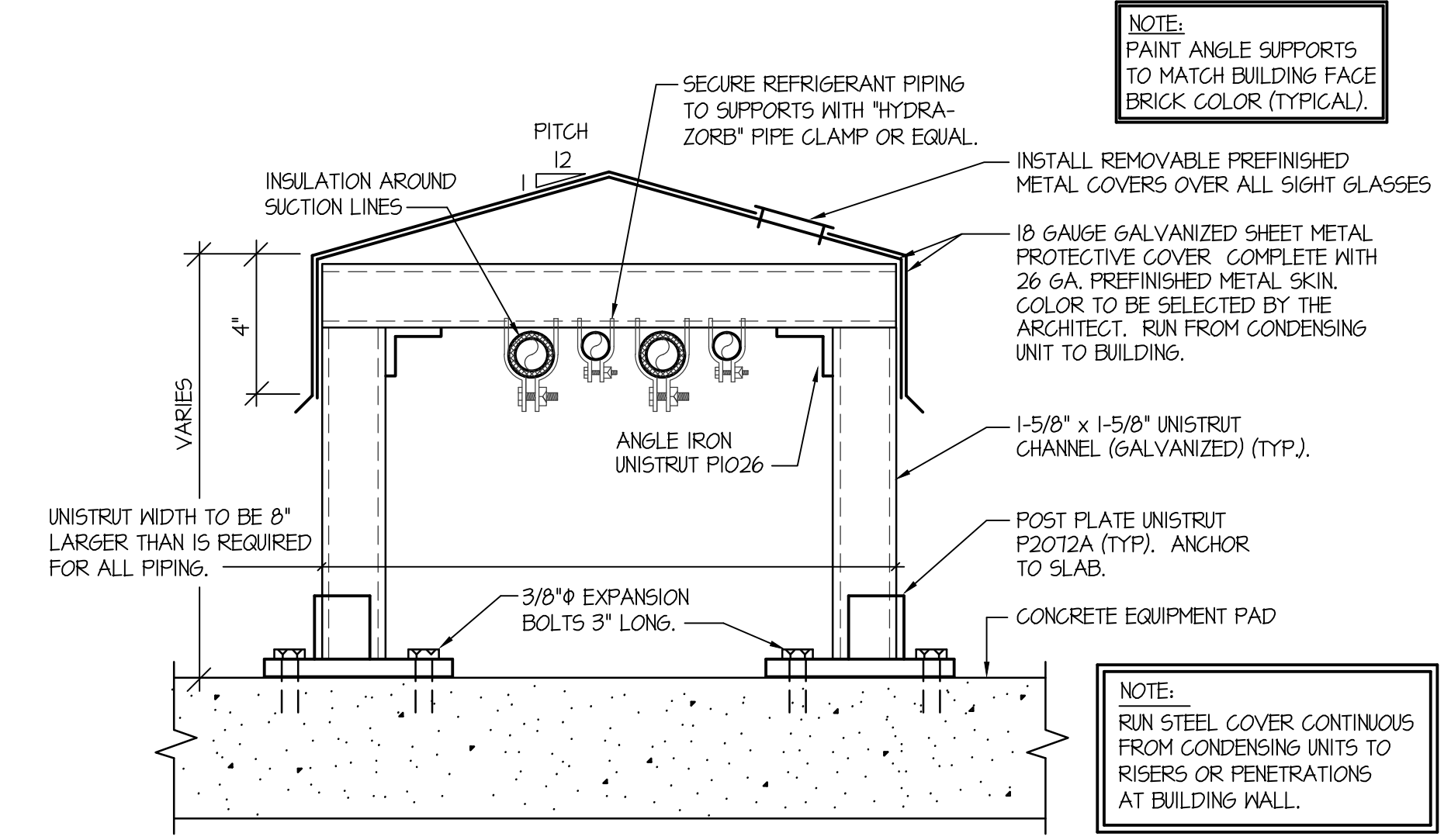
DUCT STRAP HANGER DETAIL
NO SCALE



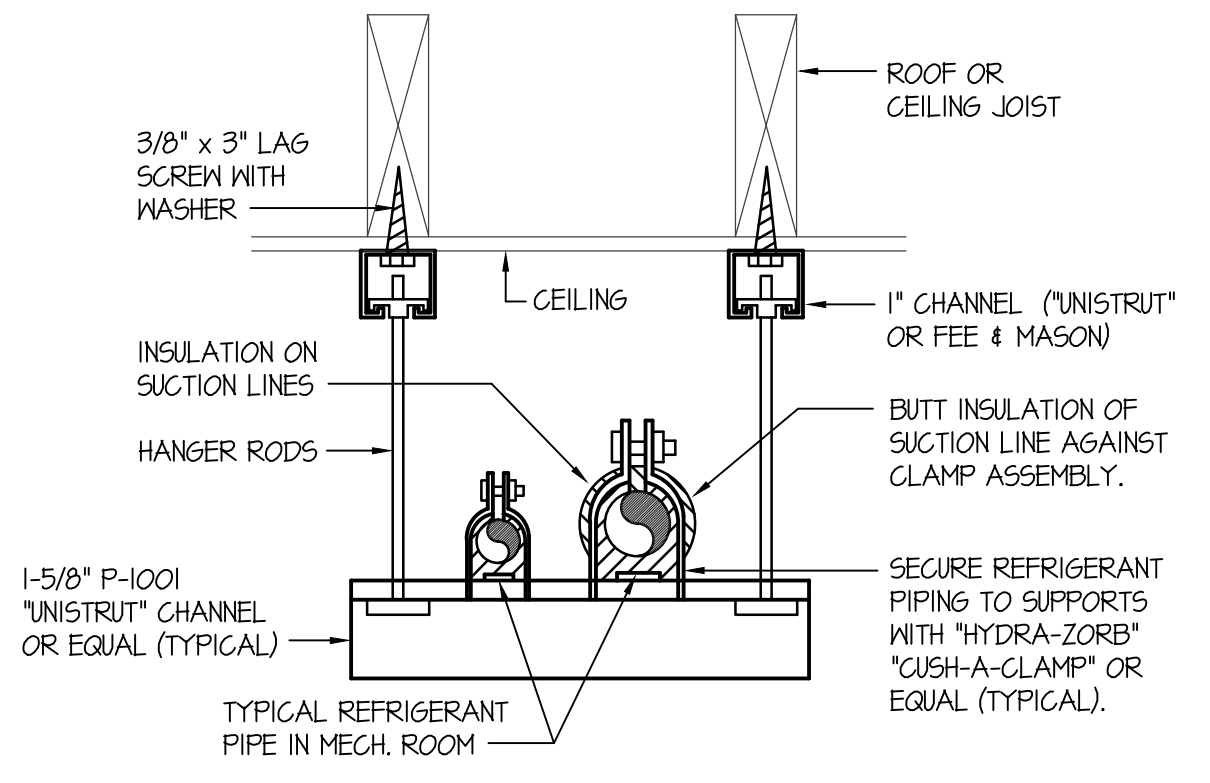
CONCENTRIC VENT TERMINATION DETAIL
NO SCALE



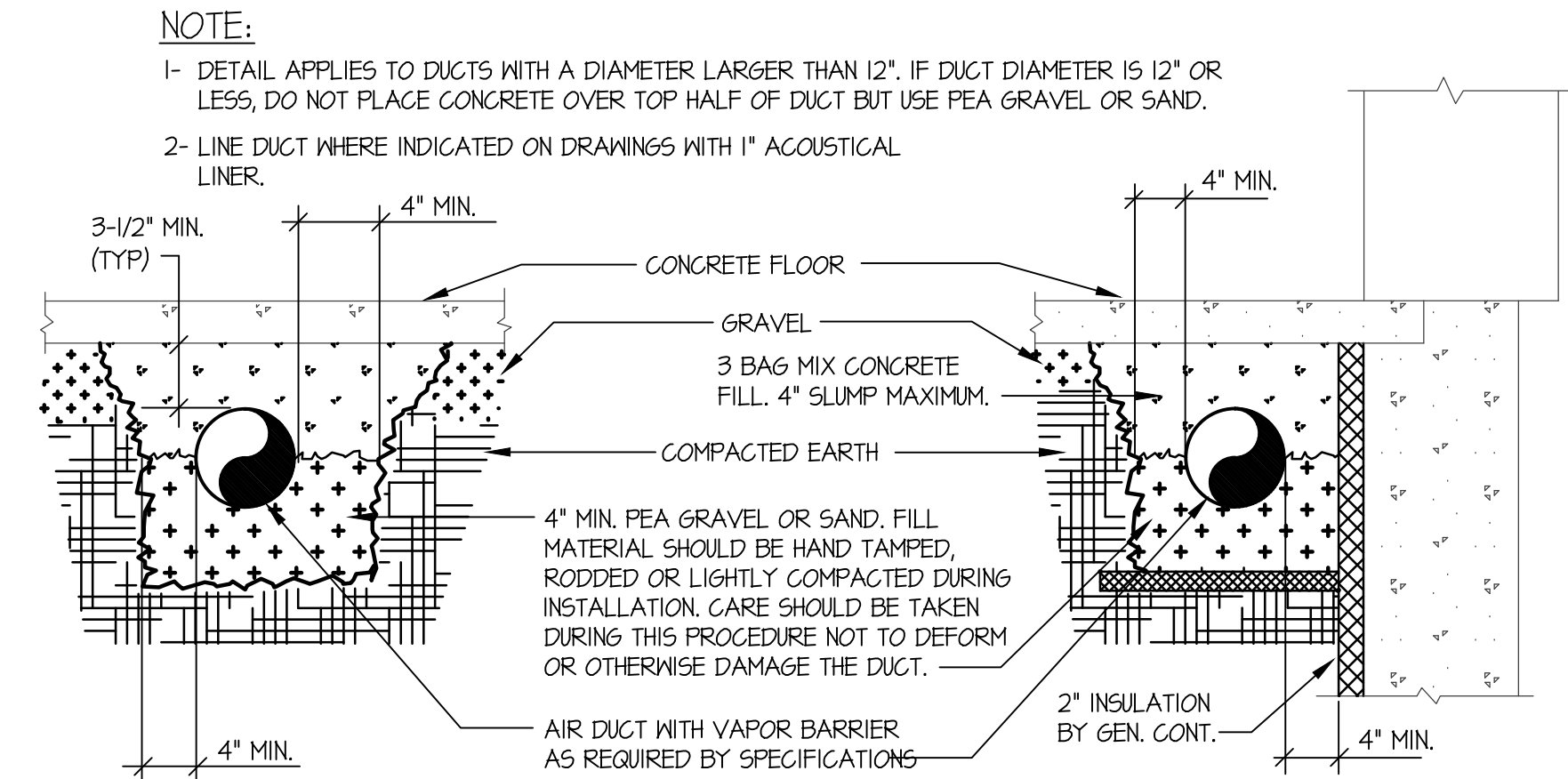
EXHAUST FAN DETAIL
NO SCALE



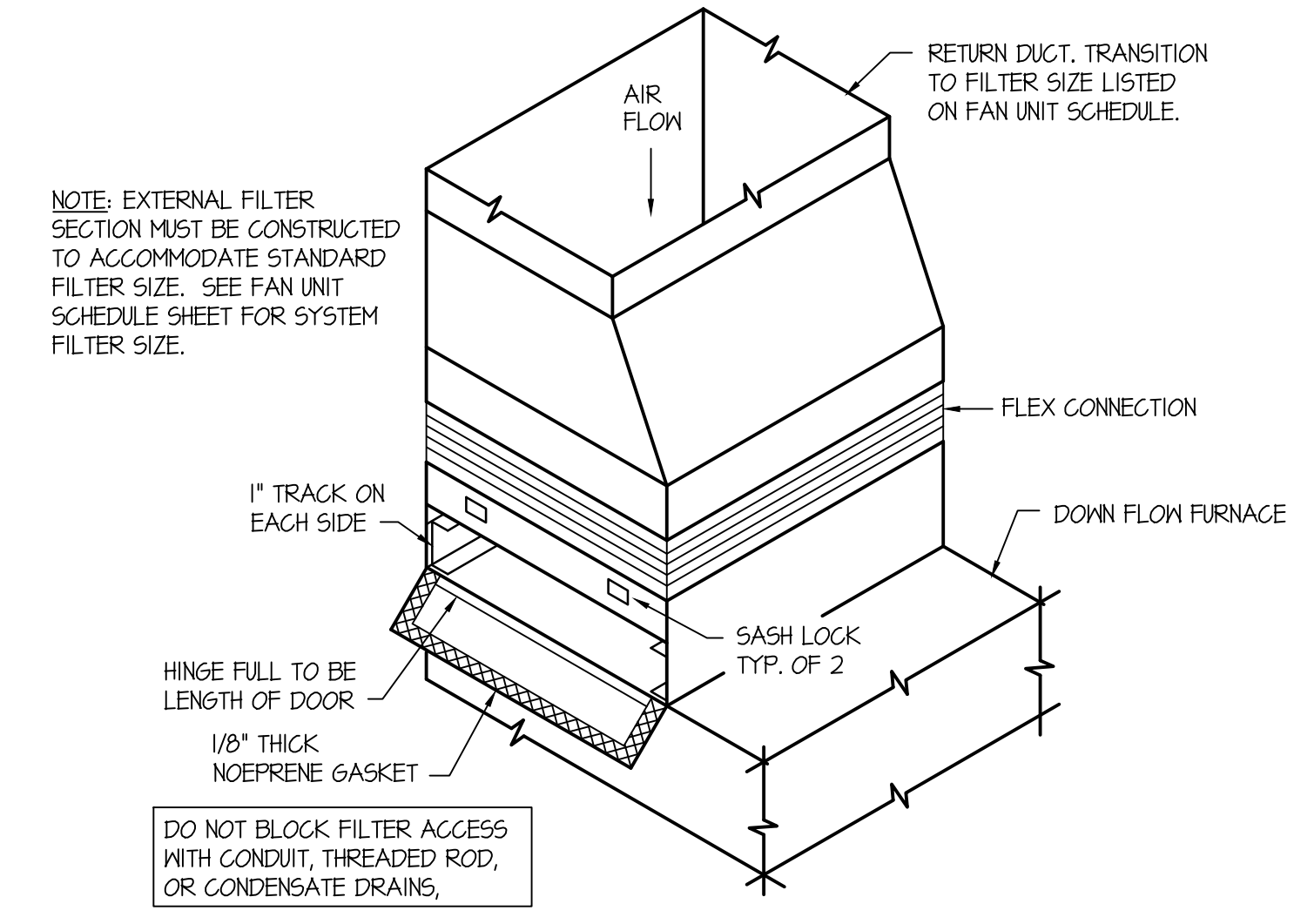
REFRIGERANT PIPE SUPPORT DETAIL
NO SCALE



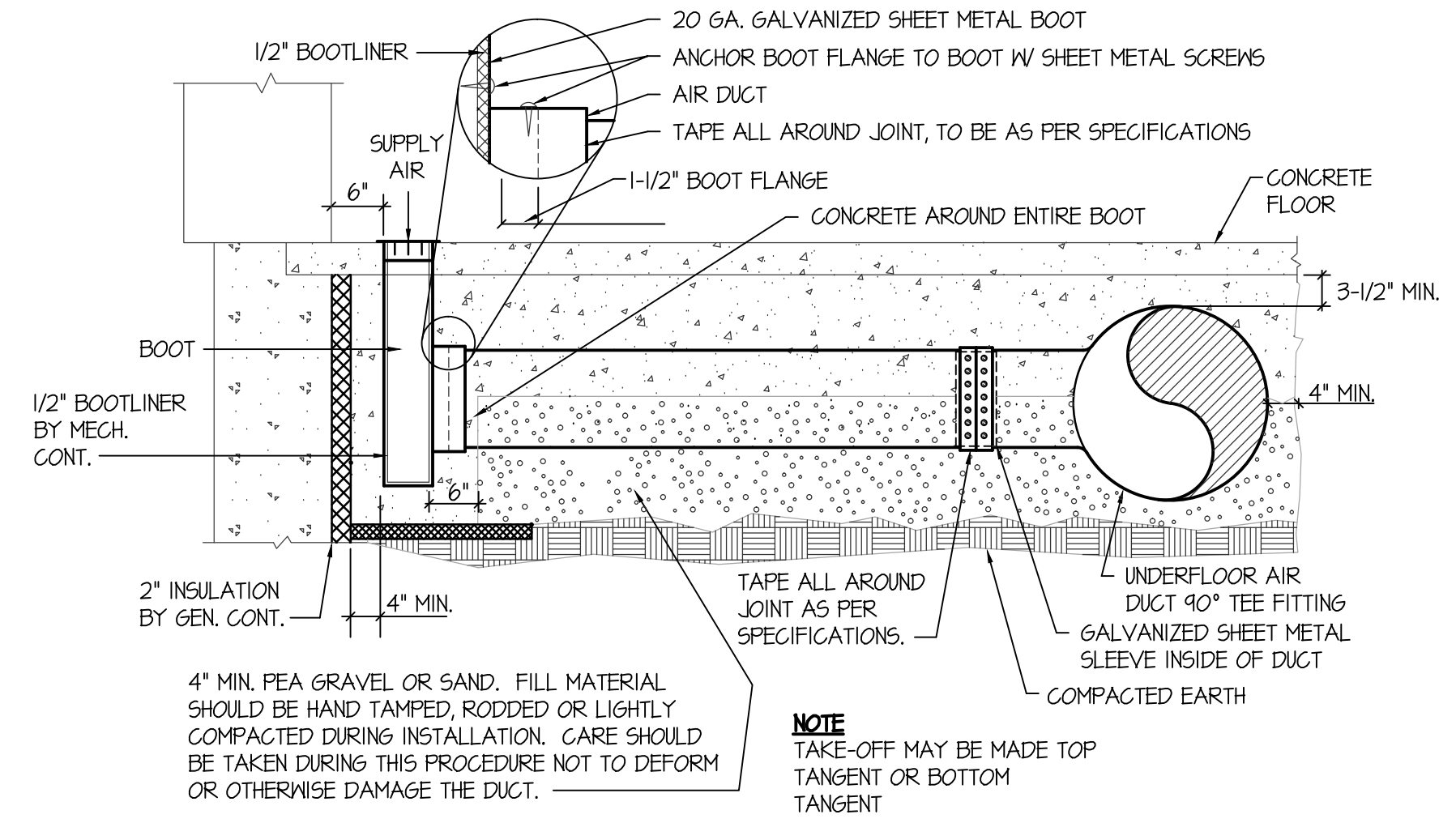
SUSPENDED PIPE SUPPORT
NO SCALE



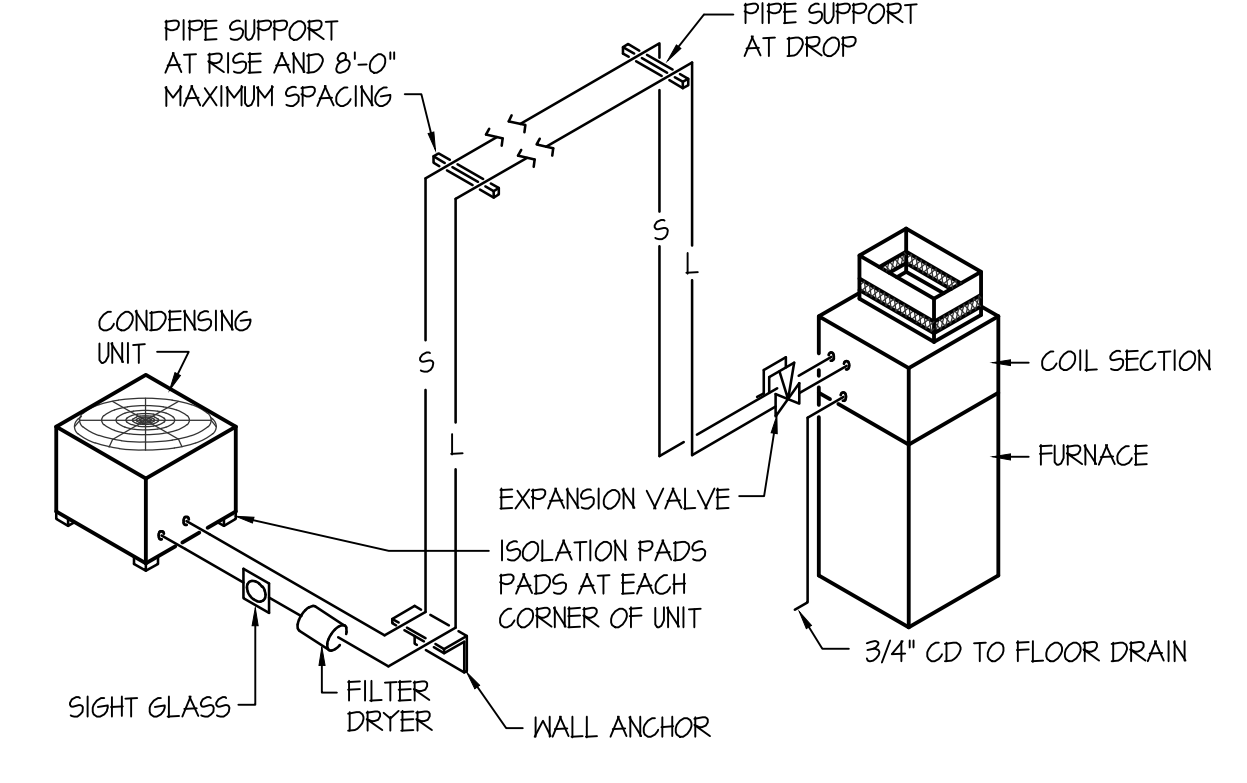
UNDERFLOOR DUCT DETAILS
NO SCALE



EXTERNAL FILTER SECTION DETAIL
NO SCALE



UNDERFLOOR DUCT & BOOT CONNECTION DETAIL
NO SCALE



REFRIGERANT PIPING DIAGRAM
NO SCALE (5 TON AND SMALLER)

NOTE: PAINT ANGLE SUPPORTS TO MATCH BUILDING FACE BRICK COLOR (TYPICAL).

NOTE: RUN STEEL COVER CONTINUOUS FROM CONDENSING UNITS TO RISERS OR PENETRATIONS AT BUILDING WALL.

NOTE:

- 1- DETAIL APPLIES TO DUCTS WITH A DIAMETER LARGER THAN 12". IF DUCT DIAMETER IS 12" OR LESS, DO NOT PLACE CONCRETE OVER TOP HALF OF DUCT BUT USE PEA GRAVEL OR SAND.
- 2- LINE DUCT WHERE INDICATED ON DRAWINGS WITH 1" ACOUSTICAL LINER.

NOTE: EXTERNAL FILTER SECTION MUST BE CONSTRUCTED TO ACCOMMODATE STANDARD FILTER SIZE. SEE FAN UNIT SCHEDULE SHEET FOR SYSTEM FILTER SIZE.

NOTE: TAKE-OFF MAY BE MADE TOP TANGENT OR BOTTOM TANGENT

F:\18\18096 SUMMERFIELD CLUBHOUSE\0916 M-2.dwg Nov 07, 2014 - 9:44am

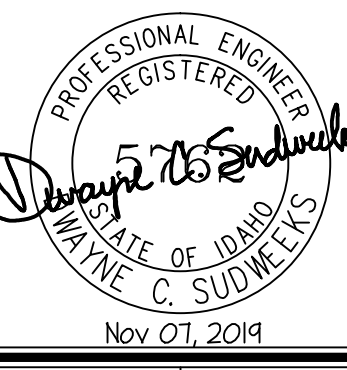


Engineered Systems Associates
Mechanical Engineers

Dwayne Sudweeks
1355 East Center - Pocatello, Idaho 83201
Phone: (208) 233-0501 Fax: (208) 233-0529 email: esa@engsys.com

SUMMERFIELD CLUBHOUSE
REXBURG, IDAHO

MECHANICAL DETAILS



DRWN. BY: SR	CHK. BY: DCS
JOB NO. 18096	DATE: NOV. 2014

SHEET: **M-2**
OF: THREE